

# Tuscan Stucco

100% Acrylic, Sandable, Interior and Exterior Finish



Rustic Sophistication. Simple Application.

# LaHabra

# Interior and Exterior Decorative

## The Perfect Finish Starts with LaHabra.

With over 100 distributors nationwide

and one of the widest selections of

decorative finishes on the market,

LaHabra is committed to making

design enhancement more practical

by providing innovative products and

technologies. For more information

about Tuscan Stucco or other high-

quality LaHabra finishes and cladding

products, visit [www.lahabrastucco.com](http://www.lahabrastucco.com)

or contact your local LaHabra Stucco

distributor.

## For a Finish that's Rustic, Warm and Inviting.

Nothing says welcome more than a warm and inviting, Tuscan style interior.

And now it's easier than ever to create one for interior and exterior walls, ceilings and special features with LaHabra's Tuscan Stucco Finish.



## Tuscan Style. As You Like It.

Comprised of 100% acrylic, Tuscan Stucco is durable enough to be used as a finish coat both inside and outside. And with proven, field-tested performance, you can rely on it for ease of application and long-lasting results.

- Tuscan Stucco comes ready to apply in convenient, 5-gallon pails.
- Application is easy over a variety of substrates including high-quality plaster and gypsum board and other smooth surfaces.
- Tools used for surface treatments include stainless steel trowels, spatulas, brushes, rollers and sandpaper.
- An infinite choice of colors can be easily applied by tinting, staining or glazing.
- Periodic cleaning with soap and water is all that's needed to maintain a Tuscan Stucco finish in good condition.

# Wall Finish.

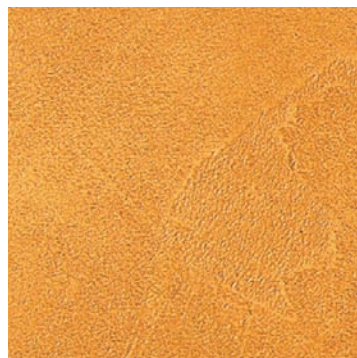
## Innovate Easily with a Variety of Tools and Techniques.

Tuscan Stucco is fine, textured finish that produces the look and feel of smooth suede and can be applied with a variety of tools. It can be tinted and/or stained for an almost endless assortment of colors and effects.

- Retain ridges, streaks and chatters in the skim coat to produce a dramatic, old-world look.
- Lace the surface with a second color to add dimensional highlights for a unique, two-tone finish.
- Fashion a rough, suede texture by rolling on two thin coats and adding a glaze or stain.
- Burnish to produce a fine texture or sand the surface for an ultra smooth texture.
- Create numerous other textured designs based on techniques that are available from LaHabra Stucco.



Lightly applying a second color to the surface creates a dimensional quality that gives Tuscan Stucco a dramatic, two-toned effect.



LaHabra Select Finishes are high-quality products that

provide a truly unique appearance for interior and exterior applications. Because the effects they achieve are dependent on using specialized techniques, applicators are required to attend a product education seminar before installation.

# LaHabra Tuscan Stucco Finish

## Description

Tuscan Stucco is a decorative, multi-effect, versatile acrylic finish. It is a tintable, sandable finish for use on interior and exterior surfaces to obtain different textures, including stone-suede.

## Uses

Tuscan Stucco can be used as a finish coat for interior walls, ceilings, and special decorative features. It can be applied over most high-quality plaster and interior gypsum board bases, flat concrete, stucco, masonry, or other smooth substrates. Contact LaHabra for specific substrates.

## Advantages

- Easy to achieve texture effects
- Tintable to almost any color
- Suitable for interior or exterior applications
- Can be used with LaHabra Antiquing Gel

## Packaging

5 gallon pails

## Coverage

30 square feet per gallon/150 square feet per pail  
(Depending on texture)

## Colors and Textures

Tuscan Stucco can produce a multitude of textures and is available in unlimited colors.

## Surface Preparation

1. Surfaces must not be exposed to temperatures below 40° F for a 24-hour period prior to finish application.
2. If used, a base coat must cure a minimum of 24 hours before applying Tuscan Stucco. (Note: Curing time may be longer in cool and/or humid climates)
3. Surfaces must be unpainted, clean, dry, structurally sound and free from efflorescence, grease, oil, form release agents and curing compounds.
4. Cure concrete at least 28 days before applying Tuscan Stucco. If curing compounds or form release agents are still present on the surface, wash it thoroughly with muriatic acid and then flush it to remove residual acids.
5. Skim coat masonry surfaces with joints struck flush using a base coat to produce a smooth, level surface and allow it to cure at least 24 hours before applying Tuscan Stucco.
6. Clean and level existing brick to form a smooth surface and allow it to cure for 24 hours before applying Tuscan Stucco.
7. Interior drywall should be finished to a level 3 finish.

## Mixing

Mix Tuscan Stucco to assure product is uniformly dispersed. Add a little water, if required, to achieve a workable consistency.

## Application

*LaHabra requires that all applicators attend an educational seminar on LaHabra Select Finishes. LaHabra recommends that the project owner or designer approve a job site mock-up of the application of this product. The mock-up should demonstrate the products' appearance under the conditions given by the project specification(s).*

- Use stainless steel trowels, spatulas, brushes or rollers to produce intended results.
- Trowel apply a thin skim coat of Tuscan Stucco to cover the substrate. For a smooth finish, the skim coat should be allowed to dry completely and then be sanded to remove high points. For an Old World look, ridges, streaks and chatters in the skim coat are necessary.

**Two tone effect** - Apply a second coat of Tuscan Stucco over the whole surface, allow to set. Add lacing of a second color to create highlights. Add fine textures by burnishing with a trowel while still damp.

**Suede effect** - Dilute material with 1 part water to 2 parts Tuscan Stucco and roll on first coat with a 6" "weenie" roller with 1/2" nap. Let dry 1-2 hours. Trowel on the second coat and allow to dry. Apply glaze or stain to achieve a suede effect.

**Custom finishes** - Specific textures can be achieved by using different application techniques. Contact LaHabra regarding custom designs.

## Clean Up

Clean tools frequently using clean water.

## Maintenance

LaHabra Tuscan Stucco can be cleaned with a soap and water solution followed by a warm water rinse. Do not use harsh or abrasive cleaners.

## Storage and Handling

Transport and store Tuscan Stucco in closed, undamaged containers. DO NOT ALLOW TO FREEZE.

## Shelf Life

If the product remains in an unopened, undamaged, original sealed pail that is properly transported and stored, Tuscan Stucco has a shelf life of up to 1 year.

## Cautions and Limitations

Recommended for structurally sound, clean, smooth substrates. In case of contact with eyes, flush with clean water and seek medical attention if irritation persists. Use only when surface and air temperatures are above 40°F (4°C) during application and drying time. Do not allow to freeze until completely dry.



### Corporate Office

**ParexLaHabra, Inc.**  
4125 E. La Palma Ave., Suite 250  
Anaheim, CA 92807  
Telephone: 714-778-2266  
Toll Free: 877-LHSTUCCO  
Fax: 714-774-2079

### Plants

Riverside, CA  
French Camp, CA  
Albuquerque, NM  
Colorado Springs, CO  
San Antonio, TX  
Redan, GA  
Wilkes Barre, PA

### Warehouses

Anaheim, CA  
North Hollywood, CA



Email: [info@lahabrastucco.com](mailto:info@lahabrastucco.com)  
[lahabrastucco.com](http://lahabrastucco.com)